



## A MESSAGE FROM MARK STANDEN, CO-EXECUTIVE DIRECTOR OF THE FRANK FOUNDATION

I've been involved in youth camping in one way or another since 1960, when I took up at Camp Kawanhee with some apprehension as one of its youngest campers. Since then, I've observed the camp experience from many different angles, as camper, counselor, director of activities, parent, Frank Foundation board member, and now as co-Executive Director of the Foundation. When our children were quite young, there was also a period of about a dozen years when I had little involvement with Kawanhee. Viewing the camp experience from all of these vantage points has led to my abiding belief that Kawanhee is simply one of the richest educational experiences out there.

These are challenging and exciting times for the Frank Foundation and for Camp Kawanhee. As a charity in its infancy, the Foundation continues to define and refine its purpose, guided by a dedicated and talented Board, of Directors. With the help of the Foundation, Camp Kawanhee is poised early in the 21<sup>st</sup> century to carry its enduring character and traditions far into the future.

These exciting prospects exist at a particularly challenging time for boys' camps. According to a recent survey conducted by the Maine Youth Camping Association, 60% of Maine's responding boys camps are under-enrolled. Although Kawanhee has experienced some of this hardship in recent years, the 2007 season showed promising signs that enrollment is returning to a level worthy of Kawanhee's history and its program. This was the first summer since 2001 that has seen an increase in Kawanhee's enrollment. Our camper retention rate in 2007 exceeded 75% for the first time in several years, and our successful recruitment of new campers jumped dramatically, at least 30% higher than in any of the previous several summers. These are good omens indeed, and we intend to build on this momentum in 2008.

Alumni can be a critical resource in the area of camper recruitment. Liz and I logged many miles this past winter, meeting with prospective campers and their families. We intend to do so again this winter, and would welcome any help from alumni in identifying potential Kawanhee campers, wherever they may be.

Of course, Camp Kawanhee continues to make a compelling case as a character-building force for boys, holding fast to the principles that have defined the Kawanhee

experience for 87 years. As a safe haven in a complicated world, camp has probably never been more relevant to the lives of our campers than it is now.

Boys these days have their work cut out for them, for reasons too complex to address in a paragraph or two. I guess growing up has always been difficult, but the particular challenges facing boys in the early 21<sup>st</sup> century have to be as daunting as ever. The ramped-up pressures to compete and win, the elusive definition of boyhood, the pervasive and frenetic influence of technology in the digital age, the limited opportunities for experiencing the natural world and spontaneous play, the increasingly high stakes of scholastic achievement and college admissions ... these forces, among others, tend to leave boys little time for play, reflection, and the spaces in which to learn about self and others.

Boys survive what our society throws at them, and many even seem to thrive, at least by some of the measures that have won favor lately. But those measures tend not to tell us much about some things that matter a great deal, intangibles that defy measurement. This is where Kawanhee becomes most relevant.



**Friends for the summer! Family for a lifetime!!**

(continue on page 2)



Camp is, first and foremost, a fun time. It is a welcome release from school and the pressures that attend it (and, in some cases, from school friends and the pressures that attend them). It is fun in its own pure way, perhaps in a way that is only possible when boys are keeping their own company, guided by college-age mentors who live with them and give them much to aspire to, surrounded by abundant opportunities for play and adventure. Friends are made quickly at camp, as though kids are as keenly aware as grown-ups that summer is indeed short and they'd better get on with it. Once camp friends are made, they tend to last, often long after a camp career has given way to college, a livelihood and a family of one's own.

Camp friendships endure because they are honest to an unusual degree. When new campers come to Kawanhee, they tend to shed their bravado, posturing and inhibitions quickly. They learn from the veteran campers around them that it is acceptable to express their affection and enthusiasm for their lodge mates and for their camp. They come to embrace Kawanhee's traditions, rhythms and quirks without apology. Boys feel safe at camp, safe expressing who they are and who they are becoming. I am convinced that boys yearn for environments in which all of this is possible, indeed expected. Any of us is lucky to find such a place.

Kawanhee is not a specialty camp or a sports camp. It is, very intentionally, a liberal arts camp. Our program is premised upon the conviction that a summer at camp should be an experiment in trying out new things, pushing beyond the familiar, taking a dare to struggle and to succeed. There are myriad ways to struggle and succeed at camp, the

footrace, the tennis match, the clay piece turned on the lathe, the model sailboat chiseled and rigged by hand, the biscuits baked in a reflector oven, the Eskimo roll executed in a fury of white water, and on and on. It is an integral part of the culture of Kawanhee that all of these pursuits are affirmed and respected. Camp is a fertile place for finding new passions, and some of those discoveries are profoundly life-changing.

We also hold to the belief that free time is essential to the mission of camp. Children tend to be busy, and their schedules at home and at school are often tightly-packed. Although a typical day at camp conforms to a schedule and offers structured learning opportunities, it also affords a generous amount of time when campers are accountable to themselves rather than to adults. These are the spaces in which boys can figure out what makes them tick, what gratifies them, what matters to them. Learning to keep one's own company and the company of one's peers, deciding on the spur of the moment to shoot hoops or go fishing, having an uninterrupted hour or two to talk with friends, these are tremendously important ingredients of a day spent at Kawanhee.

In closing, those of us who are responsible for protecting and continuing Kawanhee's legacy understand the promise that legacy holds for boys growing up in 2007. We are determined to see it through, and we welcome your participation. If there is anything you can do to help, or if you have questions about the Frank Foundation or Camp Kawanhee, please be in touch.

## **CAMP KAWANHEE'S FACILITIES GET A FACE LIFT!**

**by Mark Sengelmann, Director of Buildings and Grounds**

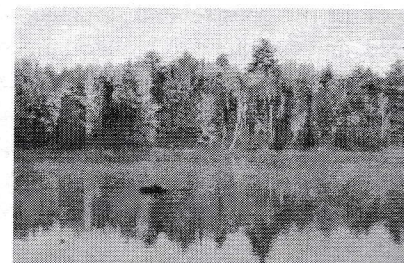
Recently, the George and Raymond Frank Foundation Board of Directors, as steward of Camp Kawanhee, has formed a new Buildings and Grounds Committee. The Board has charged the group with a variety of tasks which includes: documenting the existing conditions of camp facilities, planning for code upgrades during the coming 5 years, updating and remodeling outdated buildings with Kawanhee's traditional architecture, restoring camp's traditional paint colors and patterns and exploring the possibility of developing a new multipurpose athletic field.

The Board has appointed Mark Sengelmann (CK 66-69, 71-75, 80) to serve as Kawanhee's Director of Buildings and Grounds. Over the years, he has given many hours of his expertise in a consulting capacity to Kawanhee, has designed Abbott Lodge, the new Lean-to behind Skookamee Beach dedicated to Tom Ruhle, and the remodel of Campcraft. Mark has been practicing architecture for over 25 years and is currently the Chair of the Building and Grounds Committee for Portland's

historic Tate House Museum and a trustee of the Stroudwater Neighborhood Association. His firm, ALPHAarchitects, is located in Portland. He has begun the work to create the anticipated Camp Kawanhee History Museum.

For the first time this fall, we had an alumni work weekend on October 13-15. The goal of this effort was to bring Kawanhee alums together to work toward improvements needed on the camp facility. Some fun mixed in with some work had made this a great time! Watch the website for dates and times for another work weekend planned for this spring!

**West Shore near  
Skookamee in the fall**





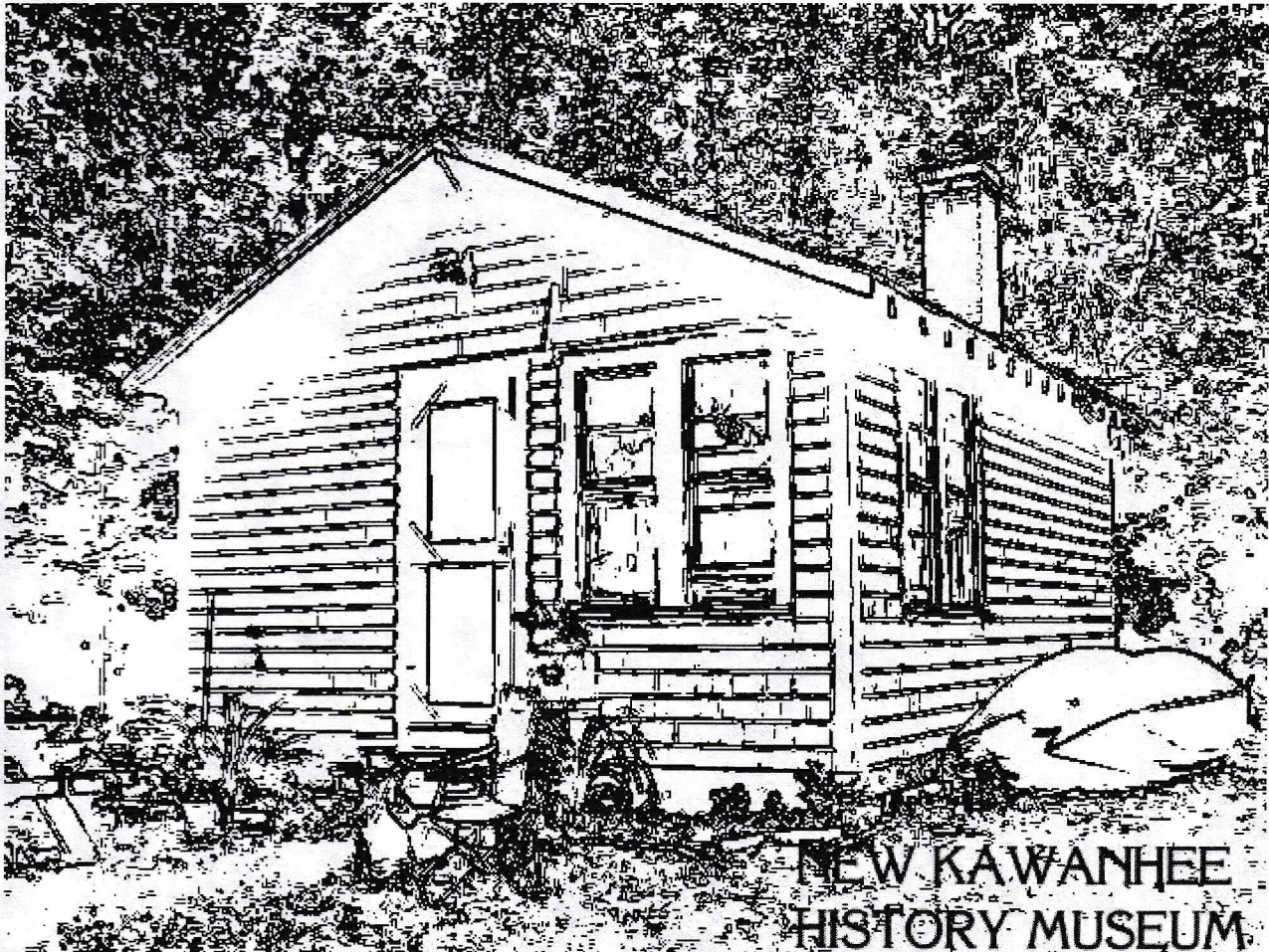
## CAMP KAWANHEE HISTORY MUSEUM

An effort is underway to create a Camp Kawanhee History Museum. We have a building and a site (between campcraft and visitor's parking) and hope to begin preparing the site and moving the building later this fall. The intent is to have a place to house memorabilia that has been donated and is found in the many nooks and crannies around camp (and maybe around your homes) so that alumni, parents and campers can view and enjoy the long and significant history that follows Camp Kawanhee and the many memories it holds for many, many folks.

Here's how you can help:

- 1) Cash donations to help with site preparation, retrofitting the building (the old kitchen boy's cabin) with shelves, appropriate lighting, windows, etc.
- 2) Donations of memorabilia, photos, shop projects, WIGWAMS, catalogues, stories and other recollections of Kawanhee experiences, etc.

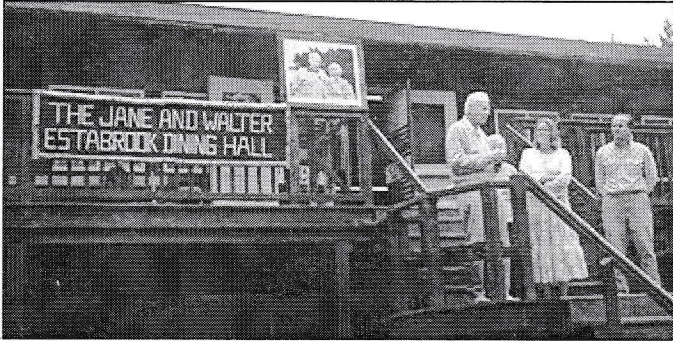
We think this is a very exciting project and the sooner we can get the funds together, the sooner we will have this completed and open for your future visits to Camp Kawanhee. If you have any feedback or questions, please contact Liz or Mark Standen @ 207 846 7741 or [mark@kawanhee.com](mailto:mark@kawanhee.com).





## CAMP KAWANHEE DINING HALL NAMED FOR JANE AND WALTER ESTABROOK

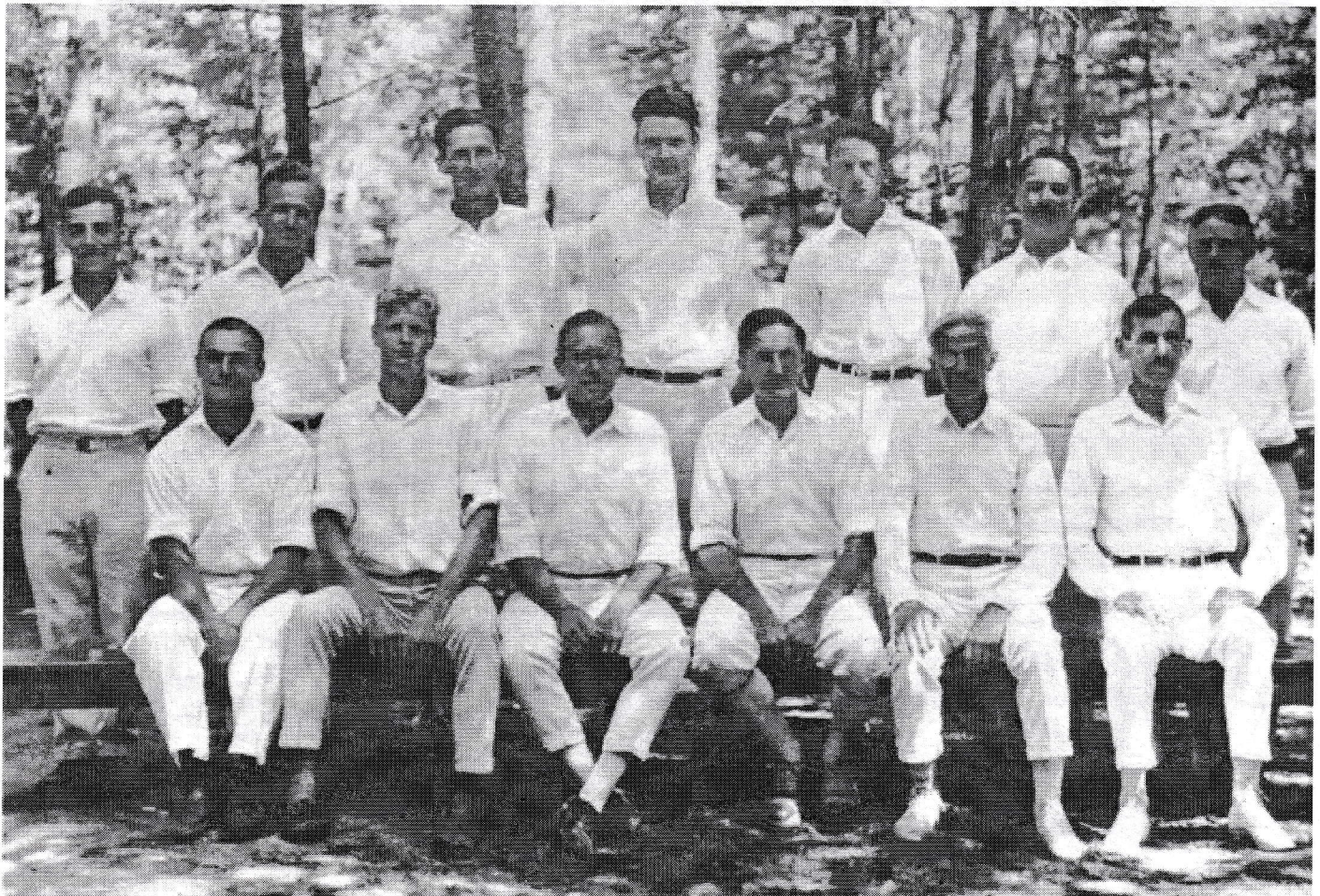
At Camp Kawanhee's final awards banquet, a sign, constructed by John and Sam Detrick was unveiled, signifying the naming of the Kawanhee Dining Hall for Jane and Walter Estabrook. Jane and Walter were Directors of Camp Kawanhee for 30 years, including the year when the Camp's historic dining hall burned down. They led the camp through that very difficult season (not a single camper went home) and managed to raise the money and have construction completed on the present dining hall, for the following camp season. The Camp Kawanhee community owes Jane and Walter tremendous gratitude for their leadership.



**Dining Hall dedicated  
in honor of Jane and  
Walter Estabrook**



*We thought readers would enjoy the reproduction of the two photos which were taken during the early years of Camp Kawanhee.*



**Camp Kawanhee Staff Photo 1924**





Recognize  
any of these  
guys?

## KAWANHEE RECRUITING GATHERINGS

Over the years, Kawanhee's recruiting base has grown considerably, to include many locations across the U.S. In addition to campers from Venezuela, Spain, Italy, and Puerto Rico, the '07 season brought campers from Florida, Connecticut, New Jersey, North Carolina, New York, Ohio, Maine, Massachusetts, Washington State, New Mexico, South Carolina, Virginia, Maryland, New Hampshire, Colorado, Georgia and Pennsylvania. We feel this broadening of our population, brings more diversity into our community, enhancing everyone's experience at Camp Kawanhee.

This fall and winter, we will be travelling throughout the United States, to Puerto Rico and Madrid, Spain to speak with prospective families and their sons and to visit with current campers and alumni.

Through the generosity of current campers and their families, there will be gatherings in the following locations which alumni and prospective families are invited to attend:

New Canaan, Connecticut... at the home of Freddy Baker, Oct. 20<sup>th</sup>

Tampa, Florida..... at the home of Sean Murphy, Nov. 17<sup>th</sup>

Albuquerque, New Mexico.... at the home of Rye and Colt Salerno, Nov. 10<sup>th</sup>

Maryland, Washington D.C. area .... at the home of Mike and Jack Dixon, Jan. 25<sup>th</sup>

Columbus, Ohio.... at the home of Dylan, Shea and Trace Rouda, Jan. 12<sup>th</sup>

Seattle, Washington ..... Feb. 2008, (date and location to be determined)

Madrid, Spain.... Feb., 2008 (location to be determined)

Weston, Massachusetts.... at the home of Caleb Tulloss (date to be determined)

Portland, Maine... (date and location to be determined)

Please keep an eye out for postings on the website [www.kawanhee.com](http://www.kawanhee.com) for specifics of time and place ... or call our Winter office at 207 846 7741.



## ALUMNI NEWS

**Richard Force**, a Kawanheean from the 1930s, passed away earlier this year, leaving The George & Raymond Frank Foundation a bequest of \$10,000. Richard's son, Ronald, visited Kawanhee with his wife this summer. They had a tour of the camp, joined us for lunch, reviewed 1930s memorabilia from Kawanhee's archives and presented a check in satisfaction of Richard's bequest. We're quite sure that Richard was one of the master campers shown on a hand-made raft in a photo that made it into many of the older Kawanhee catalogues. In later years, Richard regularly attended Kawanhee reunions and made several other pilgrimages to Kawanhee. His generosity is greatly appreciated.

**Steve Yale**, current member of the Foundation's Board and former Kawanhee camper and counselor, celebrated his fiftieth birthday this August out in Truckee, California. Earlier this year, Steve and **Don "DL" Long**, also a current Board member and former camper and counselor, climbed Mt. Shasta, a 14,162 foot peak in northern California, to celebrate Steve's fiftieth year. A belated Happy Birthday, Steve!

**Will Fleming**, a Kawanhee camper and counselor from the 1970s and 1980s now living in Boca Raton, Florida, spent a week in Weld this summer with his family, wife Kelly and sons William and David. They had a great time and are working on getting back to Lake Webb next summer as well.

**Scott Norris**, a camper in the 1980s, was recently heard from. He's living in Columbus, is married and has three young children. They all thought seriously about a trip to Weld in late August, but were daunted by the car ride and opted for a family vacation closer to home. Hopefully they'll make it to Maine next summer.

**Keith Erf, DL Long, Albert Natelli, Andy Trayner, Chip Trayner and Rees Tulloss** all had sons at camp enjoying their first Kawanhee summers. **Dave Alexander, Tim Bolon, Richard Coons, Keith Erf, Geb Keny, John Rullan, Ferd and Kate Schoedinger, Mark Sengelmann, Bill Williams and LuAnn Detrick Weihe** all had sons back at Kawanhee as veteran campers. Our 2007 counselor staff included the sons and/or daughters of **B. A. Altmaier, Tim Dargusch, John Duncan, John Estabrook, Jim Keny, and Mark and Liz Standen**.

For more alumni news, please check our website ([www.kawanhee.com/guestbook](http://www.kawanhee.com/guestbook)), where Kawanheean of all generations have posted messages from such places as England, Michigan, Spain, Oregon, Ohio, Washington, Iowa, New Mexico, California, Florida, Maryland, New Jersey, Venezuela, Austria and Texas, among others!

## DONOR'S CORNER

### IRA Opportunity Sunsets on December 31st

Effective for a two-year period ending on December 31<sup>st</sup> of this year, distributions made from an IRA to a qualifying charity (the George and Raymond Frank Foundation is one of these!) are excluded from the income of the IRA owner. To take advantage of this rare opportunity afforded by the Pension Protection Act of 2006, the owner must be at least seventy years of age, and the amount excluded is limited to \$100,000 per year. Under the usual rules, which will again apply beginning on January 1<sup>st</sup>, 2008, a gift from an IRA to a charity made during the owner's lifetime is treated as a taxable distribution to the owner, who then has to claim an itemized deduction for the gift. Qualified IRA owners can get significantly greater leverage by making charitable gifts directly from their IRAs before the end of the year. Anyone considering a possible gift to the Foundation should contact Mark or Liz Standen at (207) 846-7741.

### A Plan for Some Vans

The Foundation is interested in acquiring two serviceable vans or minivans this winter, to be used by Kawanhee for airport pick-ups and drop-offs, transporting campers to the doctor when necessary, and other such errands. If any alumnus is interested in donating a used van in good condition, the Foundation would be most grateful. The ideal vehicle would be sound, safe and have fewer than 70,000 miles. Such donations are income tax deductible, subject to provisions of federal tax law. The Foundation will gladly provide the required written acknowledgment required for tax reporting purposes, and will arrange for delivery of the vehicle to Maine. Any potential donors should please contact Mark or Liz Standen at (207) 846-7741.



## PUBLIC INSPECTION OF FOUNDATION'S ANNUAL RETURNS

As required by a federal law applying to tax-exempt organizations, the George and Raymond Frank Foundation's annual information returns (Forms 990) have been, and continue to be, available for public inspection during regular business hours at its primary office. The Foundation's primary, year-round office is located at 121 Main Street, Yarmouth, Maine 04096, about 20 minutes north of Portland on the coast. Although the office is staffed full-time during regular business hours, we suggest that anyone planning to stop by call ahead to be assured of a successful visit.

Of course, any alum should also feel free to stop by just to say hello, catch up on the Foundation's activities or offer donations of money or time!

Dear Kawanhee Alumni:

As I'm sure many of you have heard, we had a terrific summer this year, with an abundance of joy and camp spirit! We had a very strong camper return rate this summer at 80%, including 9 campers who returned from two years ago. This is the highest return rate on record for the last 6 or so years. Some highlights of the season were; an all-camp trip to a Sea Dogs baseball game in Portland, and a camp-wide effort to be "un-plugged" for the summer. Our CIT's designed a "Kawanhee Un-plugged" t- shirt capturing the camp-wide sentiment to leave GameBoys, cell phones, computers and other gadgetry behind for the summer. A CD was recorded with songs written and sung by camp counselors and campers titled "Un-plugged". Camp Kawanhee is alive and well, thanks to the enthusiastic and dedicated support of campers, their parents, counselors, staff and alumni!

As we have transitioned into new management and address fiscal concerns, one of our goals has been to reduce the amount of money taken out of our operating budget to fund scholarships. Last year we were able to partially fund several campers through outside scholarship sources. We hope to do more of this. Camp Kennebec Alumni Foundation, a group formed when their beloved camp discontinued, chose our camp and one of our campers to be the recipient of one of their scholarships. They have agreed to pay tuition for this boy for each year that he returns to Kawanhee. Another fund in Maine, 'Summer Champs', helped pay for two boys' camp experiences this summer. If any of you have knowledge of any funding sources in your area for camp scholarships, we certainly would appreciate the information.

Over the years, Camp Kawanhee has been very generous, giving a very large number of full and partial scholarships (far exceeding those given by surrounding comparable camps), giving many boys an opportunity to have the camp experience that they otherwise may not have. In many cases, this has been an extraordinary commitment to each boy, because it has meant financial assistance not just for a year, but for the many years that a camper returns to camp.

In order to continue to provide this level of assistance to future Kawanhees, we ask for your help. Many of you have been the recipients of scholarship assistance from Kawanhee, or have family members that had a Kawanhee experience because of the generosity of the organization. It is possible, and in some cases probable, that you find yourselves in a different financial situation today. We ask that you consider and take this opportunity to give back to Kawanhee's scholarship fund so that other boys may enjoy the opportunity that you and/or your sons have enjoyed.

Our scholarship fund needs your support!! Remember, your gift is tax deductible. Please include your contribution in the enclosed envelope and check the blank beside "Please use my gift only for this purpose: \_\_\_\_\_". Write in "scholarship" in the blank.

With gratitude and appreciation for your support.

George and Raymond Frank Foundation Scholarship Committee,

Steve Yale, John Estabrook, Mark Standen



## KAWANHEE CONTRIBUTIONS - THANK YOU!

The George and Raymond Frank Foundation appreciates the strong support of Kawanhee's alumni and friends. The following donors listed below have made contributions since the last listing of gifts in the June 2006 issue of the Alumni Wigwam.

Anna Abbott  
 John & Anne Abbott  
 Pam & Peter Albertsen  
 Ann D. Baker  
 Charles "Admiral" Barkwill  
 Kenneth Beck  
 Barry & Mary Ann Birch  
 Bonnie Birch  
 Mary Birch  
 George & Dagmar Brainard  
 Barbara Cahill  
 Kenneth & Sally Foster Carson  
 Cindy & Anthony Cottone  
 Helen & John Detrick  
 Sam & Audrey Detrick  
 Victoria & Robert Dickson  
 John & Joanne Dixon  
 Margaret Dodge  
 Keith & Louisa Erf  
 Robert Erf  
 Jane & Walter Estabrook  
 Mr. & Mrs. Paul Ferber  
 Mary & Paul Fink  
 Richard Force  
 John Forman  
 Samantha Fortunato  
 Liz & Bob Fox  
 David Gallagher & Amy  
     Buckingham  
 James Garland  
 Mr. & Mrs. John Gill

Nicholas & Kathy Gill  
 Ellen Goldsberry  
 Philip & Barbara Green, III  
 Garth & Lindsay Greimann  
 Theodore Griley  
 Marion & Stephen Hall  
 Ed & Mary Hamblin  
 Frank Henry  
 Larry & Norma Hinds  
 Mrs. Charles H. Hiser  
 Fred Hoster  
 Chris Huntington  
 Russ & Lois Huntington  
 Kay Jenkins  
 Carl & Renate Jensen  
 Russell Jessen  
 Albert & Tracy Johnson, Jr.  
 Thomas & Patricia Johnston  
 Chris Juergens  
 Robert Litwak  
 Robert MacArthur  
 Jameson & Maria Marvin  
 Michael & Cecilia Mathews  
 John Maurice  
 Virginia & William McEwan  
 Richard & Joan Miller  
 Sean Minear  
 Jeff & Molly Morgan  
 Dr. Jim Murphy  
 Dorothy Neidig  
 D. Kirk Neiswander

Phillip & Rosita Olson  
 Billy Proctor  
 William and Lucretia Romey  
 David & Karla Roth  
 Steve Ruhle  
 Craig Rule  
 James Sanders  
 Mark Schiewetz  
 Vivienne & Ted Seeley  
 Mark Sengelmann  
 Mark & Julie Sengelmann  
 Henry & Kathryn Shepherd  
 Wayne K. & Susan Shontz  
 Oscar Shamamian & Llewellyn  
     Sinkler  
 Spillman Co.  
 Mark & Elizabeth Standen  
 Patricia & Michael Standen  
 Theodore & Marion Stotzer  
 Dick & Nancy Stowell  
 Donald Swift  
 Mark Ward  
 James Warren  
 Lucia Weihe  
 Andy & Robin Williams  
 Bill & Celeste Williams  
 David & Velma Williams  
 Dennis & Mary Sue Williams  
 Sandy Winkles

**If you would like to make a contribution, please make your check payable to and mail to:**

George and Raymond Frank Foundation, P.O. Box 789, Yarmouth Maine 04096

**The Alumni WIGWAM**  
 Camp Kawanhee  
 PO Box 789  
 Yarmouth, Maine 04096

First Class Mail